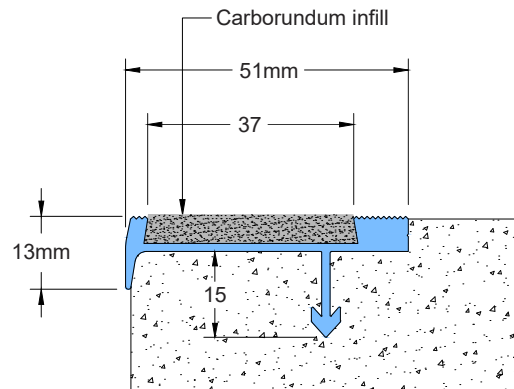
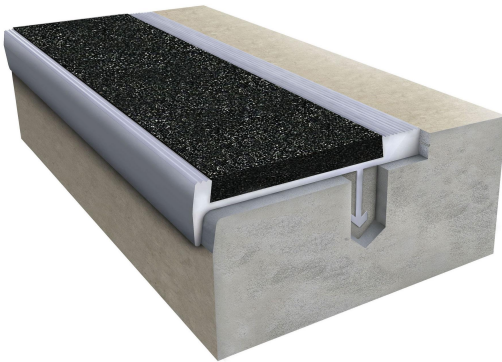


Features

- System designed for outdoor application
- Double component nosing
- Heavy nosing design and in-situ installation makes this product most desirable for heavy duty applications
- In-situ installation designed for use with poured or precast concrete, terrazzo, steel pan cement filled stair
- Easy installation
- 2"(51mm) tread area
- 1/2"(13mm) riser area
- Standard profile length 10'(3 meters)
- Factory cut option available
- Made of construction grade aluminum alloy 6063 T6

SNN 02



Color Options:



BK

Special Note: Customer is encouraged to locally source anchors and construction grade external adhesive for fixing because the local conditions vary from country to country