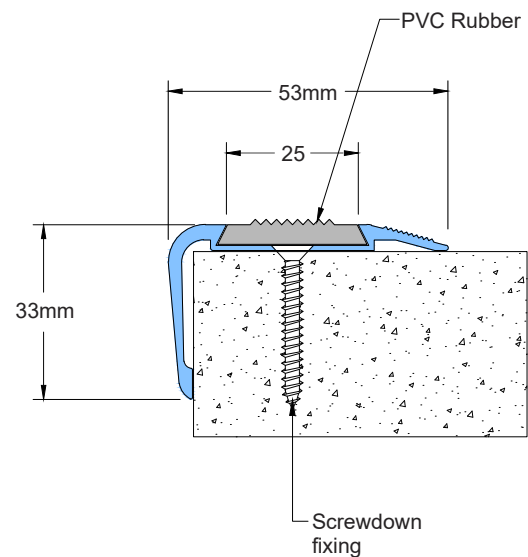
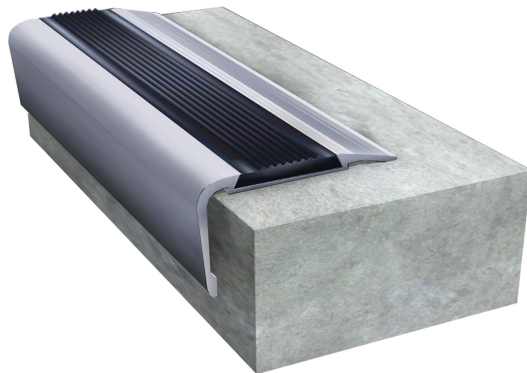


Features

- System designed for indoor application
- Double component nosing
- Easy installation & maintenance
- 2-1/8"(53mm) tread area
- Available in 4 standard anodized Aluminum color options
- 1-1/4"(33mm) riser area
- Standard profile length 10'(3 meters)
- Factory cut & drilled option available
- Suitable for dry / wet anchoring
- Made of construction grade aluminum alloy 6063 T6

SNQ 02 Screwdown Fixing



Color Options:



MILL FINISH

Special Note: Customer is encouraged to locally source anchors and construction grade external adhesive for fixing because the local conditions vary from country to country