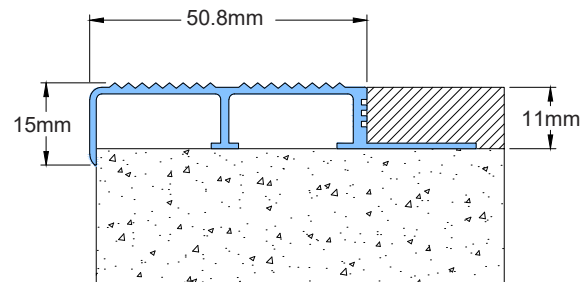
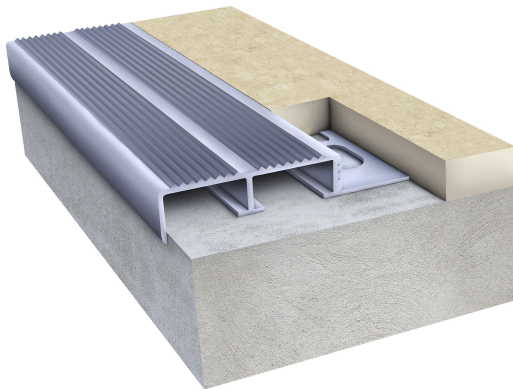


Features

- System designed for indoor application
- Single component nosing
- Easy installation & maintenance
- 2" (50.8mm) tread area
- 5/8" (15mm) riser area
- Standard profile length 10' (3 meters)
- Factory cut & drilled option available
- Made of construction grade aluminum alloy 6063 T6
- Suitable for ceramic/porcelain tiles
- Available in 4 standard metal finishes
- Custom finishes available, MOQ applies

SNO 02



Color Options:



MILL FINISH



SILVER ANODIZED



TITANIUM FINISH



BRONZE FINISH

Special Note: Customer is encouraged to locally source anchors and construction grade external adhesive for fixing because the local conditions vary from country to country