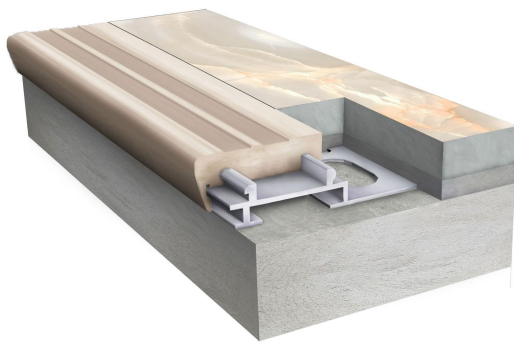
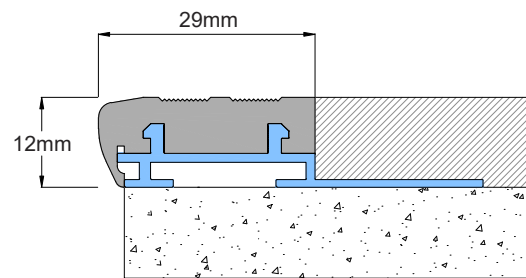


Features

- System designed for indoor application
- Double component nosing
- Easy installation & maintenance
- 1-1/8" (29mm) tread area
- 1/2" (12mm) riser area
- Standard profile length 10' (3 meters)
- Factory cut & drilled option available
- Made of construction grade aluminum alloy 6063 T6
- Suitable for ceramic/porcelain tiles
- Available in 4 standard PVC colours
- Custom colors available, MOQ applies



SNM 01



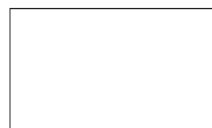
Color Options:



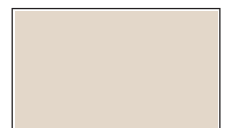
BK



GY



WH



BG