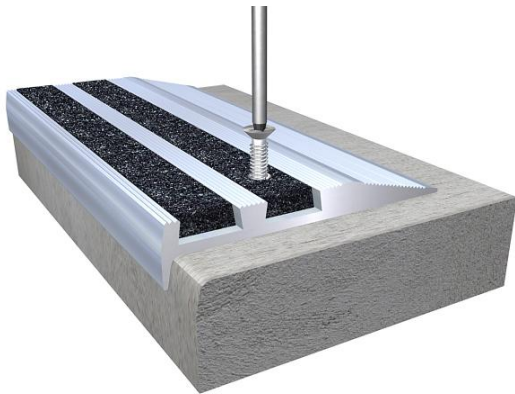
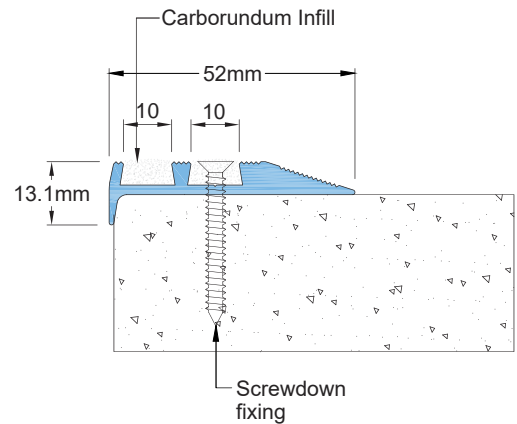


Features

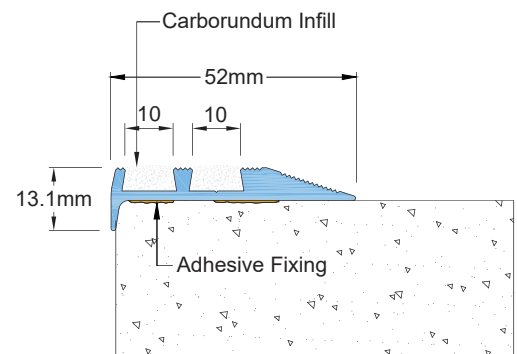
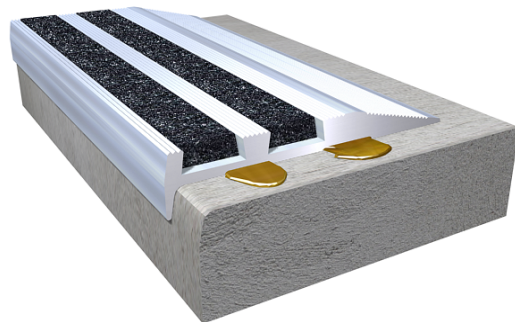
- System designed for indoor/outdoor application
- Double component nosing
- Heavy nosing retro-fit design of this product makes it most desirable for fast installations during construction/ maintenance jobs
- Mixture of carborundum chips and epoxy is filled in 2/5" (10mm) wide compartments for robust design and rapid response
- Suitable for heavy-duty pedestrian traffic
- Easy installation
- 2" (52mm) tread area
- 13/25" (13.1mm) riser area
- Standard profile length 10' (3 meters)
- Factory cut option available
- Made of construction grade aluminum alloy 6063 T6



SNK 02 Screwdown Fixing



SNK 02 Adhesive Fixing



Color Options:



MILL FINISH

Special Note: Customer is encouraged to locally source anchors and construction grade external adhesive for fixing because the local conditions vary from country to country